



# B1-0P-01-1,5S



Objekt



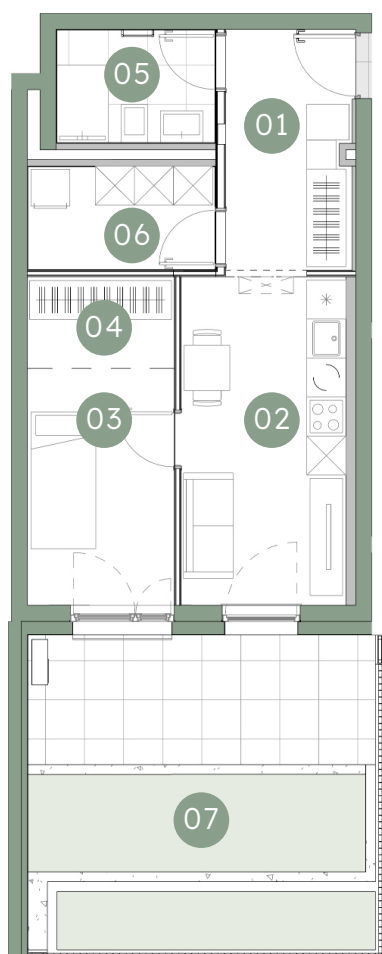
Lega v objektu



Nadstropje



Orientacija



01	Predprostor	7,32 m <sup>2</sup>
02	Dnevna soba, jedilnica, kuhinja	13,56 m <sup>2</sup>
03	Soba	8,21 m <sup>2</sup>
04	Garderoba	3,18 m <sup>2</sup>
05	Kopalnica	4,29 m <sup>2</sup>
06	Shramba	4,53 m <sup>2</sup>

**Stanovanjska površina 41,09 m<sup>2</sup>**

07	Atrij	25,44 m <sup>2</sup>
	Shramba v kleti	5,70 m <sup>2</sup>

**Skupaj prodajna površina 72,23 m<sup>2</sup>**



**B1-S28**

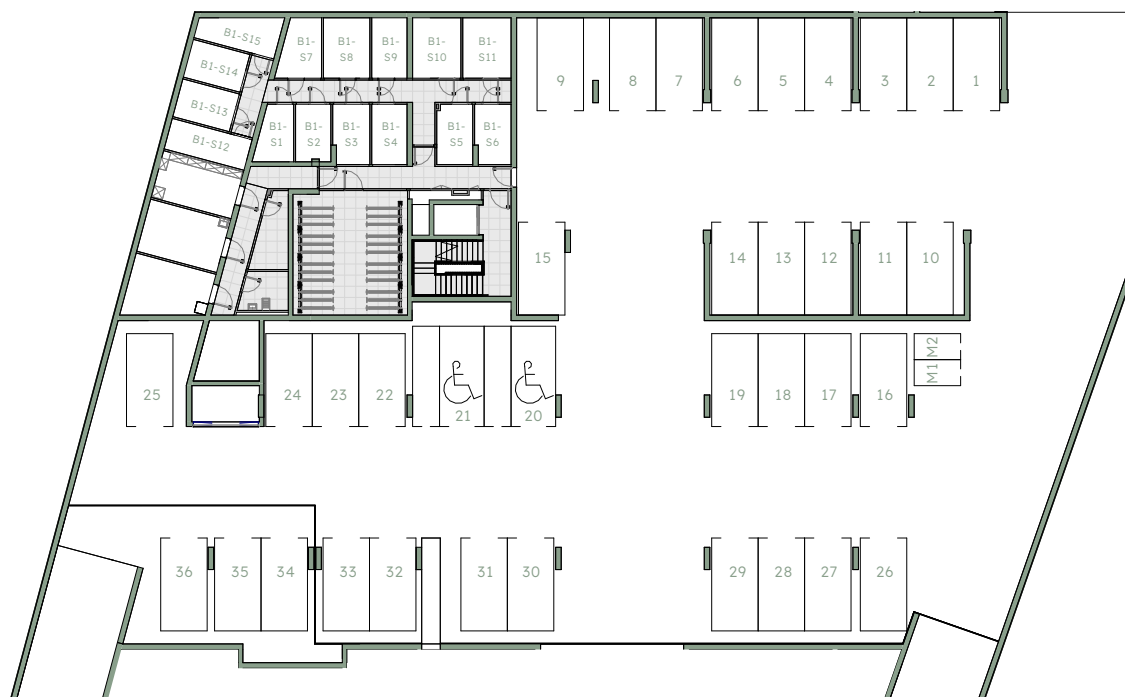
**5,70 m<sup>2</sup>**

**PM 118**

Shramba

Velikost

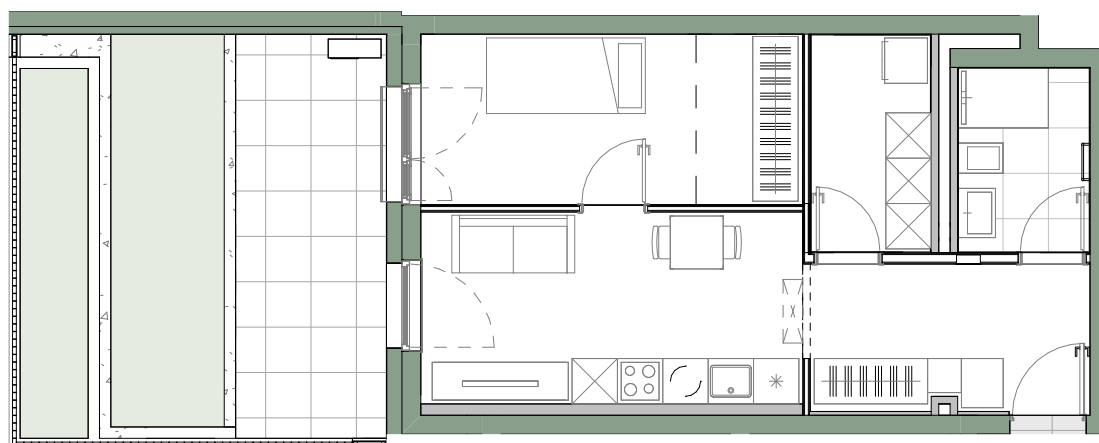
Parkirno mesto



-1 klet



-2 klet



m - 1:100