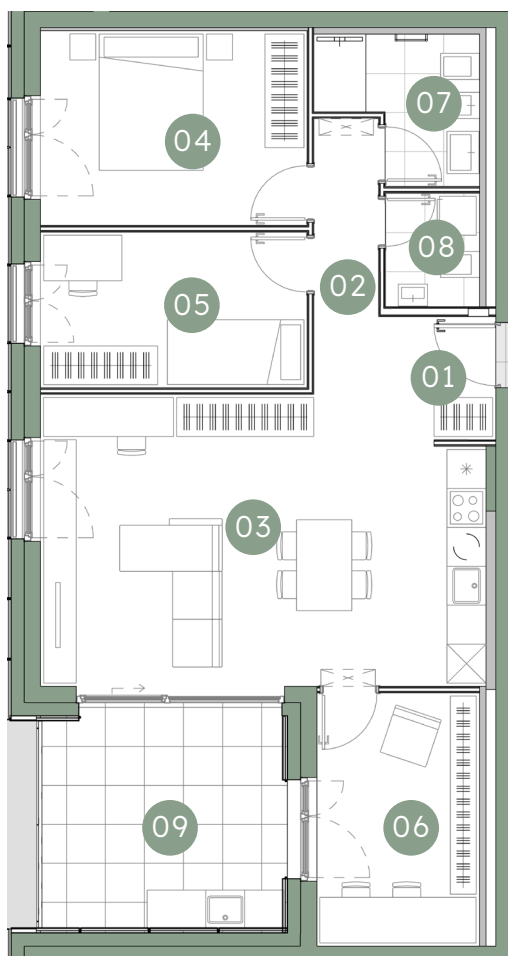




Rezidenca  
Vodmat



# B3-5T-44-4S



01	Predprostor	3,51 m <sup>2</sup>
02	Hodnik	4,25 m <sup>2</sup>
03	Dnevna soba, jedilnica, kuhinja	29,51 m <sup>2</sup>
04	Spalnica	12,30 m <sup>2</sup>
05	Soba 1	9,84 m <sup>2</sup>
06	Soba 2	9,75 m <sup>2</sup>
07	Kopalnica	4,63 m <sup>2</sup>
08	Dnevni WC/Utiliti	2,47 m <sup>2</sup>

**76,26 m<sup>2</sup>**

09	Terasa	12,90 m <sup>2</sup>
	Shramba v kleti	6,48 m <sup>2</sup>

**95,64 m<sup>2</sup>**



**B3-S15**

**6,48 m<sup>2</sup>**

**PM 72, 73**

Shramba

Velikost

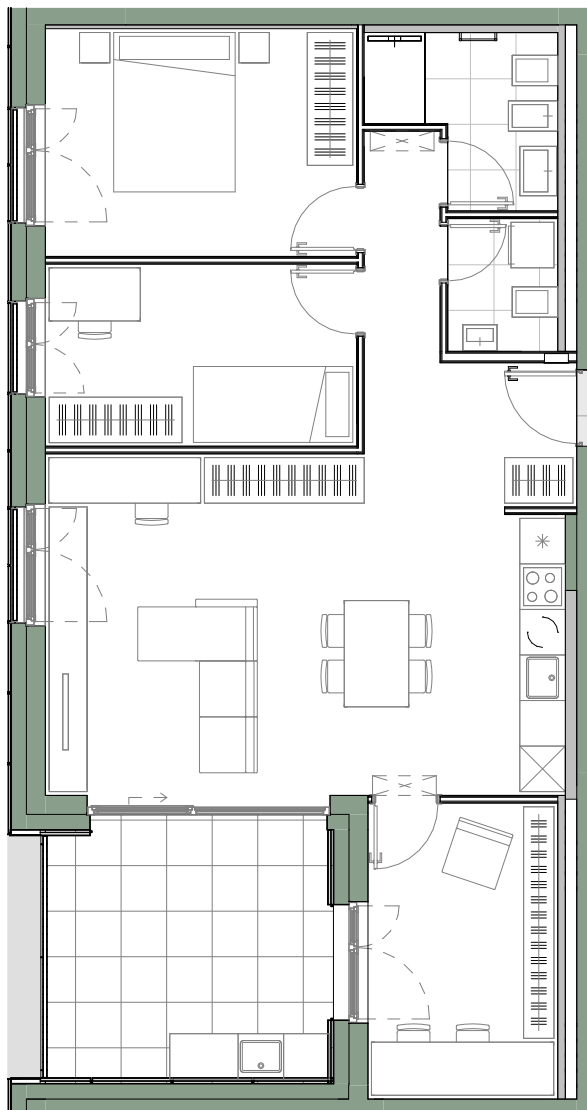
Parkirno mesto



-1 klet, objekt B3



-2 klet, objekt B3



m - 1:100