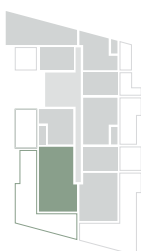




Rezidenca
Vodmat



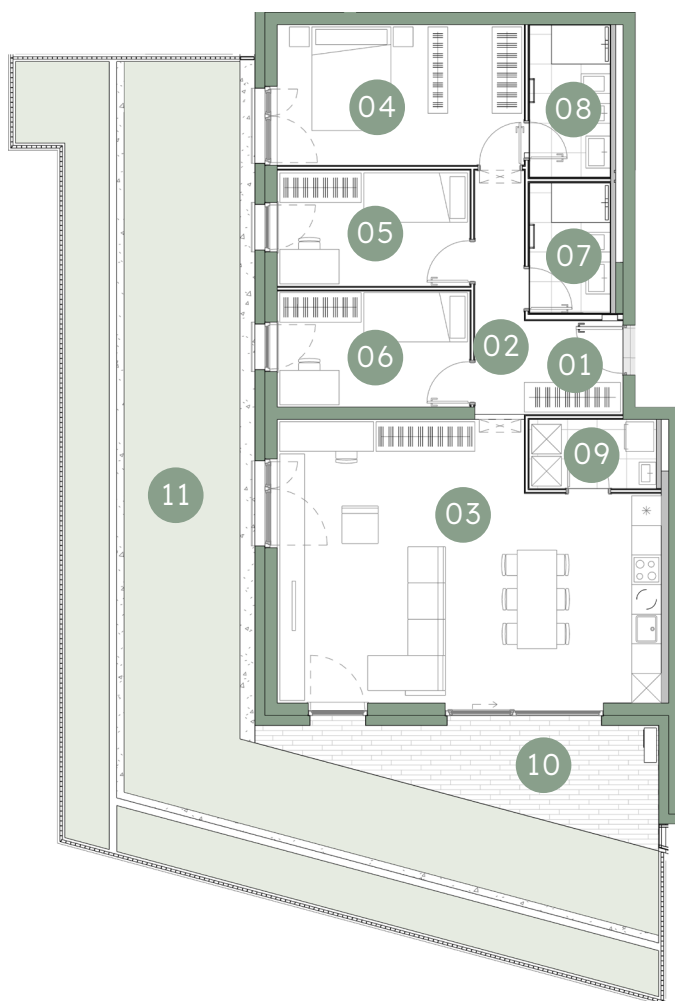
B3-0P-07-4S



OP



J



| | | |
|----|---------------------------------|----------------------|
| 01 | Predprostor | 3,80 m ² |
| 02 | Hodnik | 4,95 m ² |
| 03 | Dnevna soba, jedilnica, kuhinja | 40,55 m ² |
| 04 | Spalnica | 14,25 m ² |
| 05 | Soba 1 | 9,16 m ² |
| 06 | Soba 2 | 9,16 m ² |
| 07 | Kopalnica 1 | 4,29 m ² |
| 08 | Kopalnica 2 | 5,02 m ² |
| 09 | Shramba | 3,61 m ² |

94,79 m²

| | | |
|----|-----------------|----------------------|
| 10 | Terasa | 11,84 m ² |
| 11 | Atrij | 90,49 m ² |
| | Shramba v kleti | 8,47 m ² |

205,59 m²



B3-S38

8,47 m²

PM 195, 196

Shramba

Velikost

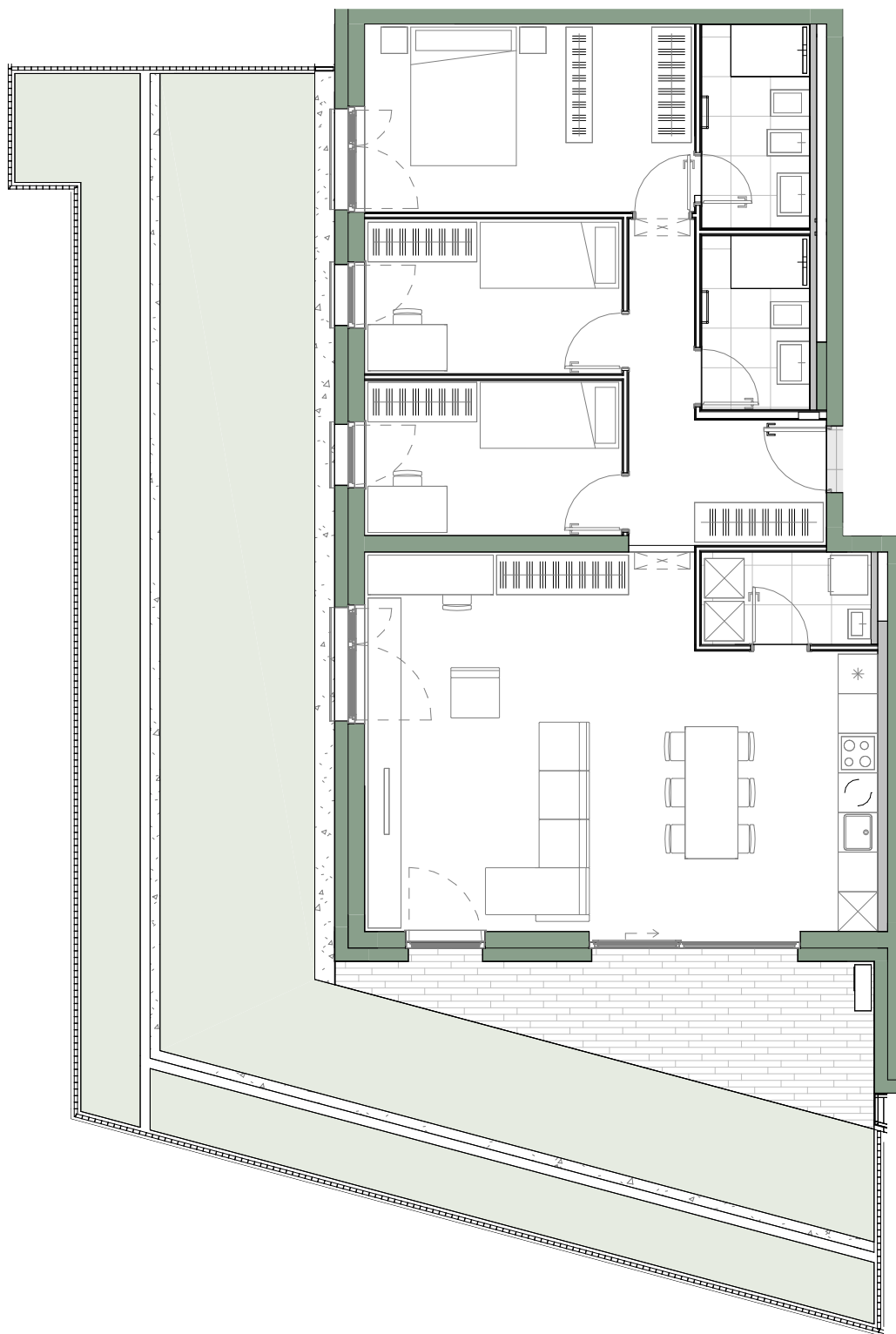
Parkirno mesto



**Položaj
parkirnega mesta:**
-1 klet, objekt B3



**Položaj
shrambe:**
-2 klet, objekt B3



m - 1:100